

Maxence Mercier

# Iquisme

Introduction  
&  
Mouvement n°1

# Nomenclature

1 Flûte (*et flûte basse*)  
1 Clarinette (*en sib et clarinette Basse en sib*)

1 Trombone + mélodica

1 voix (*soprano*)

1 Piano

1 Guitare Electrique (*ampli, avec pédales : distorsion, volume, whammy, wha-wha*)

1 Violon

1 Alto

1 Violoncelle

*percussion : Vibraphone, caisse claire, trois toms,  
cymbales : ride, splash et Chinoise  
Grosse Caisse de Concert, Tam-tam.*

1 dispositif électronique (*électroacoustique et vidéo*)

*conducteur en ut*

*Les altérations sont valables pour toute la mesure*

*durée approximative 20 minutes*

# Iquisme

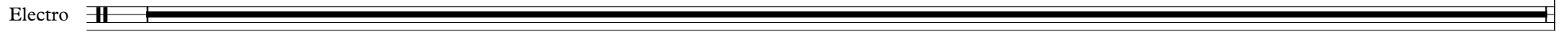
## Introduction

Maxence Mercier

♩=60

$\frac{4}{4}$  1

8



séquence électro  
sample intro

Le dispositif electroacoustique offre 4 voix de traitement audio, dénommé "groupe" (gr.).  
Les groupes offrent des combinaisons spécifiques de traitements et de diffusion du son.  
Un instrument peut être associé à un ou plusieurs groupes.



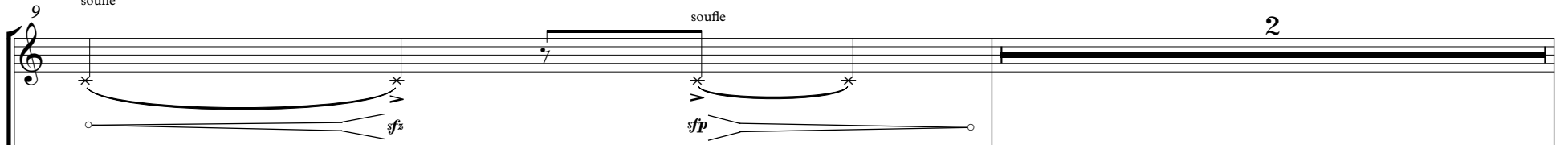
♩=80

souffle

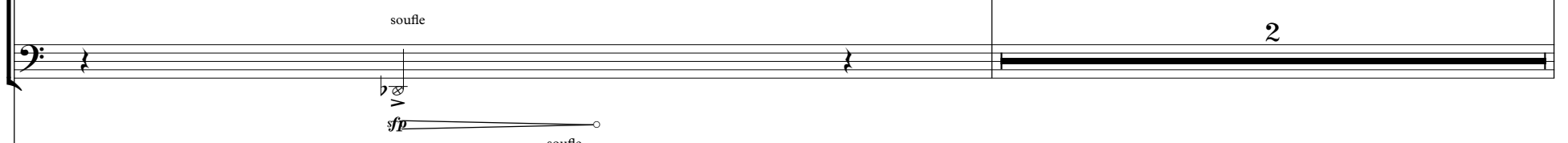
souffle

2

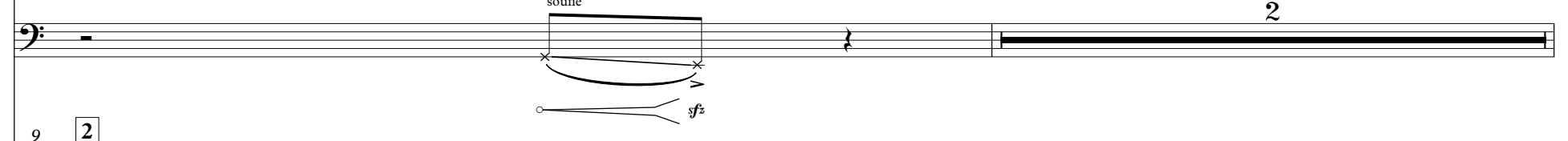
Fl. B.



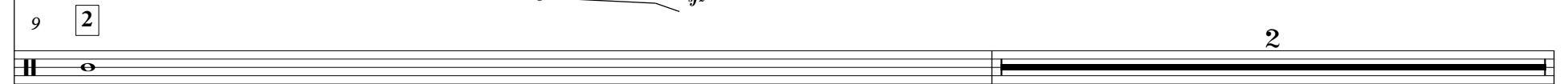
Cl. B.



Trb.



Electro



1 gr. delay  
vents

12  $\text{♩} = 80$  **accl.** . . . . .

Fl. B. norm. éolien norm.

Cl. B.

Trb. mute harmon

Voix

Vib. vibraphone

P. 12

Gtr. E clean L.V. utiliser la pédale de volume pour suivre les enveloppes dynamiques

Vln. con sord. V sul pont. → arco

Vla. con sord. V

Vc. V

Electro 12 **3** **4**

3 gr. delay  
fl. cl. trb. / vln. vla. vlc. / perc. pno. guit.

20 ♩=100

Fl. B.

Cl. B.

Trb.

Voix

Vib.

P.

Gtr. E

Vln.

Vla.

Vc.

Electro

20 5

6

1 gr. delay  
cordes

3 gr. delay  
fl. cl / vln. vla. / trb. perc. pno. vlc.

rall. . . . .

4/4

26

Fl. B.

Cl. B.

Trb.

Voix

Vib.

26

P.

Gtr. E.

Vln.

Vla.

Vc.

26

Electro

The musical score for page 5, measures 26-30, is written in 4/4 time and marked 'rall.'. It features the following parts and dynamics:

- Fl. B.:** Measures 26-30. Dynamics: ppp, p, ppp, p, ppp, p, ppp, p, ppp.
- Cl. B.:** Measures 26-30. Dynamics: p, ppp, p, ppp, p, ppp, p, ppp, p, ppp.
- Trb.:** Measures 26-30. Dynamics: ppp, p, ppp, p, ppp, p, ppp, p, ppp.
- Voix:** Measures 26-30. Rested.
- Vib.:** Measures 26-30. Dynamics: p, mp. Includes accents and slurs.
- P. (Piano):** Measures 26-30. Dynamics: mp, p. Includes accents and slurs.
- Gtr. E.:** Measures 26-30. Dynamics: ppp, p, ppp, p, ppp, p, ppp, p, ppp.
- Vln.:** Measures 26-30. Dynamics: ppp, p, ppp, p, ppp, p, ppp, p, ppp. Includes accents.
- Vla.:** Measures 26-30. Dynamics: ppp, p, ppp, p, ppp, p, ppp, p, ppp. Includes accents.
- Vc.:** Measures 26-30. Dynamics: p, ppp, p, ppp, p, ppp, p, ppp, p, ppp. Includes accents.
- Electro:** Measures 26-30. Rested.

♩=50

accel. . . . .

31 4/4

Fl. B. air noise flatt. air noise ord. 3 sub. mp pp mp n pp n

Cl. B flatt. flatt. flatt. n pp n pp p n mp pp mp n pp n

Trb. n p n mf n p

Voix

Vib. archet n p n n p n n pp n f ord.

P. L.V. 31 pp mp p f 8va 8vb f

Gtr. E pp pp disto ④ n mp n disto p

Vln. n p n n < p n n p n fp

Vla. n p n n p n n p n fp

Vc. n p n sul pont. arco n p n pp n fp

Electro 31 7 8 9 10 11 12

delay pno. guit. 2 gr. delay fl. cl. / vln. vla. vlc. input off input on input off delay pno. guit.

Prendre flute

♩=60

Fl. 38

*mf* *pp* *sfz* *n*

Cl. 38

Prendre clarinette sib

*mp* *n*

Trb. 38

enlever sourdine

*f* *n* *mf* *n* *p* *mf* *p* *mf* *pp*

Voix

Vib. 38

*mp* *f* *p* *f*

P. 38

*mf* *p* *pp*

Gtr. E 38

*f* *pp* *f* *ppp* *mp* *p* *pp*

Vln. 38

s.p. → arco

*f* *pp* *sfz* *p* *sfz* *f* *mf*

Vla. 38

*f* *p* *f* *pp* *p* *ppp* *sfz* *pp* *f* *mf*

Vc. 38

*fp* *ppp* *f* *ppp* *p* *f* *p* *f* *pp*

Electro 38

13 14

3 gr. reverse / reverse / reverse & delay  
fl. cl. trb. / vln. vla. vlc. / perc. pno. guit.

3 gr. delay  
fl. cl. / vln. vla. / trb. perc. pno. guit. vlc.



41

Fl. *mp* *pp* *mp* *pp* *sfpp* *mp* *ppp* *p* *mp* *pp*

Cl. *mp* *f* *ppp* *mp* *pp* *mp* *pp*

Trb. *p* *f* *p* *mf* *p* *sfp*

Voix *ppp* *mp* *p* *ppp* *ppp*

Vib. *p*

P. *p* *p*

Gr. E *p*

Vln. *pp* *mp* *ppp* *p* *ppp* *ppp*

Vla. *p* *sfp* *pp* *p* *ppp* *p* *ppp* *mp* *3*

Vc. *p* *mp* *pp* *ppp* *p* *ppp*

Electro

collien → ord.

sord. cup

Narrateur proche de la parole

Il y

archet

col legno

arco

arco → s.p.

41 15 16

3 gr. reverse /reverse / reverse & delay  
fl. cl. trb./ vln. vla. vlc./ perc. pno. guit.

pppp

44

Fl. *n* *sfp* *ppp* *sfp* *n* *mf* 6

Cl. *n* *sfp* *n* *pp* *mf* *pp* *mf*

Trb. *ppp* *sfp* *ppp* *mf*

Voix *mf* *pp* *mf* *ppp*  
a un rien

Vib. *f* *p* *f* *n*

44

P. *mf*

Gtr. E *p* *mp* *ppp*

Vln. *sfp* *n* *sfp* *p* *sfp* *ppp*

Vla. *n* *sfp* *n* *sfp*

Vc. *n* *sfp* *ppp* *sfp*

44 17

Electro  input off

47

Fl. *pp* *f* *pp* *mf* *pp* *mf* *n* *fp* *ppp* *pp* *f*

Cl. *pp* *mf* *pp* *mf* *pp* *mf* *ppp* *f* *ppp* *f* *ppp*

Trb. *pp* *n* *mf* *n*

Voix  
d'a - bord il y a il y a

Vib.

P.  
47 *mf* *p* *mf* *p* *f*  
*mp* *p*

Gtr. E

Vln. *mf* *ppp* *mf* *ppp* *mf* *ppp* *pp* *f* *ppp* *f* *ppp*

Vla. *n* *mf* *ppp* *mf* *p* *f* *pp* *f* *ppp*

Vc. *ppp* *mf* *ppp* *mf* *ppp* *mf* *n* *pp* *f* *pp* *f*

47  
Electro



♩=80

52 *8<sup>va</sup>*

Fl. *pp* *ff* *ppp* *mf* *pp* *mf* *pp* *mf*

Cl. *pp* *ff* *ppp* *mf* *pp* *mf* *pp* *mf*

Trb. *pp* *ff* *p* *f* *p* *f* *p*

Voix *mf* *f* *mp* *ppp*

Vib. *f*

P. *f*

Gtr. E *f* *n* *f*

Vln. *pp* *ff* *ppp* *mf* *ppp* *mf* *pp*

Vla. *pp* *ff* *ppp* *mf* *ppp* *mf* *ppp* *mf* *pp*

Vc. *pp* *ff* *pp* *pp*

Electro 52 18 19 input mute

resserrer les lèvres lentement jusqu'à fermer la bouche complètement

un rien

2 gr. delay  
fl. cl. / vin. vla. / guit.

gliss. vers le bas

input mute

57

Fl.

Cl.

Trb.

Voix

Vib.

P.

Gtr. E

Vln.

Vla.

Vc.

Electro

l'on voit un rien

clean

2 gr. reverse / delay  
fl. cl. trb. / vln. vla.

éclosion

60

Fl. *pp* *f* *f*

Cl. *pp* *f* *f*

Trb. *mf* *p* *f* *p*

Voix

Vib. *f* *p* *f* *f*

P. *f* *p* *f* *f*

Gtr. E *f* *p* *p* *ff* *pp* *f*

Vln. *pp* *f* *mf*

Vla. *pp* *f* *mf*

Vc. *arco* *fp* *f* *mf* *arco* *f*

60

Electro

20

1 gr. delay  
perc. pno. guit.

63

Fl. *f* *mf* *f* *mf* *ff* *p* *f* *p* *ff* *p* *ff*

Cl. *f* *mf* *f* *mf* *ff* *p* *f* *p* *ff* *p* *ff*

Trb. *f* *p* *f* *p*

Voix

Vib. *p* *mf*

P. *p* *f*

Gtr. E *p* *ff*

Vln. *arco* *f* *mf* *f* *sul pont.* *pp* *mf* *f* *p*

Vla. *arco* *f* *mf* *f* *sul pont.* *pp* *mf* *f* *p*

Vc. *mp* *f* *pp* *f* *p*

63

Electro

1 gr. delay  
perc. pno. guit.



66

Fl.

Cl.

Trb.

Voix

Vib.

P.

Gtr. E

Vln.

Vla.

Vc.

Electro

66

22

le phy-sique et l'i-dée sont de - dans

1 gr. reverse perc. pno. guit.

Fl. *f* *ff* *f* *ff* *mp* *f* *ff* *mp* *fp*

Cl. *ff* *mp* *mp* *ff* *pp* *fp*

Trb.

Voix *f* *ff* *p* *pp* *mf*  
 Tout est de - dans

Vib. *f*

P. *mf* *ff* *mp* *f*

Gtr. E *mp* *ff* *mp* *f* *p* *f* *mf*  
 disto high crunch L.V.

Vln. *ff* *p* *ff* *mp* *ff* *f* *pp* *mf*

Vla. *mf* *ff* *p* *ff* *mp* *ff* *f* *pp* *mf*  
*8va* *sul pont* *arco*

Vc. *ff* *p* *ff* *p* *f* *pp*

Electro **23** **24**  
 input mute 2 gr. delay fl. cl. / vln. vla.



77

Fl. *mf* *ff* *mp* *ff* *mp* *ff* *mp* *mf*

Cl. *mp* *ff* *ff* *mp* *mf*

Trb. *p* *f* *mp* *f* *p* *f* *p*

Voix de- dans

Vib. *ff* *f*

P. *ff* *mf* *ff* *f* *mp* *f*

Gtr. E *ff* *f* *mp* *f* *n*

Vln. *p* *f* *p* *mp*

Vla. *>p* *f* *p* *mp*

Vc. *>p* *f* *p* *fff* *p*

Electro 77 27 28

1 gr. delay  
perc. pno. guit.

2 gr. reverse & delay  
fl. cl. / vln. vla.

rall.

♩=50

accel.

80

Fl.

Cl.

Trb.

Voix

Vib.

P.

Gtr. E

Vln.

Vla.

Vc.

80

Electro

Un rien où tout ce qui ar-ri-ve est

ppp mp mf f ppp mf f

mf mp p mf mp p mf

mf n p mf p

p mf p p

ppp p ppp

80

H

♩=70

82

Fl. *8va* *p* *ff* *p* *f* *p* *ff* *pp* *f*

Cl. *5* *ff* *p* *f* *3* *p* *ff* *pp* *f*

Trb. *ppp* *mp* *f* *3* *p* *5* *ff* *p*

Voix *p* *f*  
de - dans

Vib. *f* *3* *p* *f* *5* *p* *f* *p* *f*

P. *82* *mf* *ff* *p* *3* *mf* *p*

Gtr. E *p* *ff* *mf* *p* *f* *p*

Vln. *5* *ff* *f* *5* *p* *sul pont.*

Vla. *5* *ff* *p* *f* *p* *sul pont.*

Vc. *5* *ff* *mf* *5* *ff* *p* *sul pont.*

82 **29** **30**

Electro *tutti bypass* *2 gr. delay fl. / vln.*

rall. . . . . =60

84

Fl.

Cl.

Trb.

Voix

Vib.

P.

Gtr. E

Vln.

Vla.

Vc.

84

Electro

31

2 gr. delay  
cl. / vla.

87 **2/4** **3/4** **2/4**

Fl. *p* *f* *p* *p* *f* *p*

Cl. *p* *f* *p* *p* *f* *p*

Trb. *p* *f* *p* *f* *p* *p* *f*

Voix

Vib. *f* *p* *f*

P. *mp* *p* *f*

Gtr. E *mp* *p* *f*

Vln. *p* *f* *p* *f* *p* *sfz*

Vla. *p* *f* *p* *f* *p* *f* *p*

Vc. *f* *p* *f* *p* *f* *p* *f* *p*

87 **32**

Electro *tutti mute*



90  $\frac{2}{4}$   $\frac{3}{4}$

Fl. *p* *f* *p* *pp* *f* *pp* *pp* *ppp*

Cl. *p* *f* *p* *pp* *f* *pp* *pp* *ppp*

Trb. *f* *p* *f* *p* *f* *pp* *p* *fp*

Voix

Vib. *f* *p* *f*

P. *f* *p* *f* *p* *f*

Gtr. E *f* *p* *f* *p* *ff* *p* *f*

Vln. *p* *f* *p* *f* *pp* *pp*

Vla. *p* *f* *p* *f* *pp* *pp*

Vc. *f* *p* *f* *pp* *f* *p*

90 **33** **34**

Electro

1 gr. delay trb.

1 gr. reverse fl. cl.

93

Fl.

Cl.

Trb.

Voix

Vib.

P.

Gtr. E

Vln.

Vla.

Vc.

93

Electro

35

1 gr. delay  
vln. vla.

96 **36**

Fl. *mp* *f* *mp* *sf* *p* *ff*

Cl. *mp* *f* *mp* *ff*

Trb. *p* *f* *p* *f* *p* *f* *p*

Voix  
 Une pi - - - le et u - - - ne

Vib. *f* *p*

P.  
*f* *p*

Gtr. E *fpp* *fpp* *p*

Vln. *p* *f* *p* *f*

Vla. *p* *f* *p* *f*

Vc. *f* *p* *p* *f* *p* *mf*

Electro **36**  
 tutti mute

99

Fl. *f* *p* *f* *ffp* *f*

Cl. *f* *p* *f* *ffp* *f*

Trb. *pp*

Voix *mf* *f* *p sub.* *p* *f*  
 fa - - - ce en bou - - - le

Vib. *mp* *f*

P. *mp* *f* *f*

Gtr. E *mp* *pp* *p*

Vln. *p* *f* *p*

Vla. *p* *f* *p* *f*

Vc. *p* *f*

99 **37** **38**

Electro *1 gr. delay*  
 vln. vla. vlc. *1 gr. delay*  
 fl. cl. trb.

102  $\frac{3}{4}$

Fl.

Cl.

Trb.

Voix

Vib.

P.

Gtr. E

Vln.

Vla.

Vc.

Electro

102 **39** **40** **41**

1 gr. delay  
guit. pno. perc.

3 gr. reverse  
fl. clar. trb. / vln. vla. vlc. / guit. pno. perc.

3 gr. delay  
fl. clar. / vln. vla. / guit. pno.

105 *secco* *ord.* **2**/**4**

Fl. *fff* *pp* *ff* *f*

Cl. *f* *fff* *pp* *ff*

Trb. *f* *ff* *f* *p* *ff*

Voix il ya a

Vib. *f*

P. *f*

Gtr. E *n* *mp* *ff* *mf*

Vln. *arco* *ff*

Vla. *arco* *ff*

Vc. *ff*

105 **42**

Electro **tutti mute**

109

Fl. *ff* *p* *ff* *mf* *ff*

Cl. *p* *ff*

Trb. *pp* *ff* *pp* *mf* *f*

Voix rien

Vib. *ff*

P. *ff* *ff*

Gtr. E *ff* *n* *ff* *f* *p* *ff*

Vln. *ff*

Vla. *ff*

Vc. *p* *ff*

Electro

109

Detailed description: This page of a musical score, numbered 109, features ten staves. The Flute (Fl.) staff begins with a measure marked '109' and contains a triplet of eighth notes with a forte (*ff*) dynamic, followed by a half note with a piano (*p*) dynamic and a triplet of eighth notes with a fortissimo (*ff*) dynamic. The Clarinet (Cl.) staff has a half note with a piano (*p*) dynamic and a triplet of eighth notes with a fortissimo (*ff*) dynamic. The Trumpet (Trb.) staff has a half note with a pianissimo (*pp*) dynamic, a half note with a fortissimo (*ff*) dynamic, a half note with a pianissimo (*pp*) dynamic, and a half note with a mezzo-forte (*mf*) dynamic. The Voice (Voix) staff has a half note with a piano (*p*) dynamic and a half note with a fortissimo (*ff*) dynamic, with the word 'rien' written below. The Vibraphone (Vib.) staff has a half note with a fortissimo (*ff*) dynamic. The Piano (P.) staff has a half note with a fortissimo (*ff*) dynamic. The Electric Guitar (Gtr. E) staff has a half note with a fortissimo (*ff*) dynamic, a half note with a fortissimo (*ff*) dynamic, a half note with a forte (*f*) dynamic, and a half note with a piano (*p*) dynamic. The Violin (Vln.) staff has a half note with a fortissimo (*ff*) dynamic. The Viola (Vla.) staff has a half note with a fortissimo (*ff*) dynamic. The Violoncello (Vc.) staff has a half note with a piano (*p*) dynamic and a half note with a fortissimo (*ff*) dynamic. The Electro staff is empty. The score includes various musical notations such as triplets, slurs, and dynamic markings.





115  $\frac{2}{4}$   $\frac{4}{4}$   $\frac{2}{4}$

Fl. *mp* *f* *p* *ff*

Cl. *mp* *f* *p* *ff*

Trb. *f*

Voix rien un rien

Vib. *p* *f* *f* *ff*

P. *p* *f* *p* *ff*

Gtr. E *p* *ppp* *f* *p* *pp* *f* *ff*

Vln. *f* *p* *f* *ff*

Vla. *mp* *f* *p* *f* *ff*

Vc. *f* *f* *ff*

115 Electro

118

Fl. *ff* *mf* *ff* *f* *ff*

Cl. *ff* *ff*

Trb. *f* *ff*

Voix  
Dé - ja il y a du choix - - - -

Vib. *p* *f*

P.  
118 *f* *p*

Gtr. E *p* *ff* *p* *ff* *p* *ff* *p*

Vln. *ff* *p*

Vla. *ff*

Vc. *ff*

118

Electro

122

Fl.

Cl.

Trb.

Voix

Vib.

P.

Gtr. E

Vln.

Vla.

Vc.

Electro

2/4

2/4

3/4

2/4

8va

15ma

3

f

ff

mf

fff

8va

ff

p

f

p

ff

p

f

pp

fff

mf

ff

pp

fff

122

43

3 gr. delay  
fl. clar. trb. / vln. vla. vlc. / guit. pno. perc.

# MOUVEMENT 1

127

♩=80

Fl.

Cl.

Trb.

Voix

Vib.

P.

Gtr. E

Vln.

Vla.

Vc.

Electro

127

44

mute tutti

The musical score for page 35 of 'MOUVEMENT 1' features the following instruments and parts:

- Flute (Fl.):** Starts with a dynamic of *f* and includes triplets and sixteenth-note runs.
- Clarinet (Cl.):** Features complex rhythmic patterns with dynamics ranging from *fff* to *p*.
- Trombone (Trb.):** Includes a section marked *8va* and dynamics from *f* to *p*.
- Voice (Voix):** Shows a vocal line with the word 'il' at the end of the page.
- Vibraphone (Vib.):** Features a melodic line with dynamics from *f* to *mf*.
- Piano (P.):** Includes a piano part with dynamics from *fff* to *pp*.
- Electric Guitar (Gtr. E):** Features a melodic line with dynamics from *f* to *p* and a section marked *clean 8va*.
- Violin (Vln.):** Includes a melodic line with dynamics from *fff* to *f* and *pizz* (pizzicato) markings.
- Viola (Vla.):** Features a melodic line with dynamics from *ff* to *p* and *pizz* markings.
- Violoncello (Vc.):** Includes a melodic line with dynamics from *fff* to *p* and *pizz* markings.
- Electro:** Shows a drum part with a 'mute tutti' instruction.



rall. . . ♩=70

Fl. (8) 139

Cl. (8)

Trb.

Voix

Vib. glockenspiel pp

P. (15) (15)

Gtr. E (8)

Vln. *legato* p *ppp*

Vla. (8) *legato* p *ppp*

Vc. *> p* *f* *ppp*

Electro 139 46

3 gr. reverse  
 fl. clar. trb. / vln. vla. vlc. / guit. pno.  
 sample phonèmes

Musical score for page 38, measures 145-150. The score includes parts for Flute (Fl.), Clarinet (Cl.), Trumpet (Trb.), Voice (Voix), Vibraphone (Vib.), Piano (P.), Electric Guitar (Gtr. E), Violin (Vln.), Viola (Vla.), Violoncello (Vc.), and Electro. The key signature has one flat (B-flat), and the time signature is 4/4. The score features various musical notations such as slurs, dynamics (pp, mf), and articulation marks.

Measures 145-150:

- Fl.:** Melodic line with eighth and sixteenth notes, slurs, and dynamic markings.
- Cl.:** Melodic line with eighth notes, slurs, and dynamic markings.
- Trb.:** Rested.
- Voix:** Vocal line with lyrics "le rien" and dynamic markings (pp, mf).
- Vib.:** Rhythmic pattern of eighth notes.
- P.:** Piano accompaniment with sixteenth notes and slurs.
- Gtr. E:** Melodic line with eighth notes and slurs.
- Vln.:** Melodic line with eighth notes and slurs.
- Vla.:** Melodic line with eighth notes and slurs.
- Vc.:** Rested.
- Electro:** Rested.





157  $\text{♩} = 80$

Fl. *ppp*  $\text{f}$  *pp* *mp* *pp* *mp* *n* *p* *n* *n* *p* *n*

Cl. *ppp*  $\text{f}$  *p* *mp* *n* *mp* *n* *p* *n* *n* *p* *n*

Trb. *ppp* *mf* *ppp* *n* *p* *n* *con sord.*

Voix Un n'a pas

Vib. *mf* *ppp* *mp* *pp* *f* *pp*

P. *staccato* *mf* *ppp* *mp* *p*

Gtr. E *jusqu'à mes. 218*  
*laisser vibrer le plus possible* *n* *ppp* *mp* *p*

Vln. *mf* *pp* *mf* *ppp* *p* *n* *n* *p* *n*

Vla. *n* *mf* *pp* *mf* *ppp* *p* *n* *n* *p* *n*

Vc. *n* *mf* *pp* *p* *ppp* *n* *p* *n* *n* *p* *n*

157 47 48

Electro

2 gr. delay  
fl. clar. trb. / vln. vla. vlc.

3 gr. delay / delay / reverse  
fl. clar. trb. / vln. vla. vlc. / guit. pno. perc.

163

Fl. *n* *mp* *n* *f* *n* *f* *ppp* *f* *norm*

Cl. *f* *n* *f* *n* *p* *f*

Trb. *p* *n* *mp* *n* *p* *n*

Voix *p* *f* *pp* *f* *pp*  
 de fe - nê - tre un n'a qu'un front

Vib. *n* *f* *pp* *f* *pp*

P. *n* *f* *pp* *f* *pp*

Gtr. E *mp* *pp* *disto*

Vln. *ppp* *p* *n* *f* *n* *p* *n* *f* *n* *p*

Vla. *p* *f* *n* *p* *n* *p* *n* *n* *p* *n* *p* *n*

Vc. *n* *p* *n* *p* *n* *p* *n* *n* *p* *n* *sfp* *n*

163

Electro

168

Fl.

Cl.

Trb.

Voix

Vib.

P.

Gtr. E

Vln.

Vla.

Vc.

Electro

168

49

3 gr. delay / delay / reverse  
fl. clar. trb. / vln. vla. vlc. / guit. pno. perc.

dé - jà il y a dé - jà il y a du

*n* *ppp* *mp* *ppp* *f*

*ppp* *mp* *ppp* *f*

*p* *n* *ppp* *mp* *p*

*p* *f* *pp* *p* *mf*

*3* *5* *3* *5*

*5* *6* *5* *6* *5* *6* *5*

*ppp*

*n* *p* *n* *ppp* *mp* *ppp* *f* *ppp*

*n* *p* *n* *ppp* *mp* *ppp* *f* *ppp*

*n* *p* *ppp* *mp* *ppp*

rall. . . . .

♩=105  
172

Fl. *ppp*

Cl. *ppp*

Trb. *f* *ppp* *f* *ppp*

Voix *f* *pp* *p* *mf* *pp*  
clos Le clos

Vib. *3* *5* *5* *3* *3* *5*

P. *172* *6* *6* *5* *5* *6* *5*

Gtr. E crunch *f* *mp* *pp* *6* *6* *6*

Vln.

Vla.

Vc. *f* *n* *f* *n*

Electro *172* **50**

1 gr. reverse  
guit. pno. perc.

♩=90

Fl. *176*  
*n p n p n p*  
*p n*  
*n p*

Cl.  
*p n p n p n p n*  
*p n p*

Trb.  
*n f ppp p ppp*  
*n f*

Voix  
*p f p mp pp mp*  
*p f p*  
 n'a pas de rai - - - son

Vib.  
*5 3 5 3*

P.  
*176*  
*6 5 6 3 5 3*  
*6 6*  
*8<sup>va</sup> p*

Gtr. E  
*clean*  
*6 3 6*

Vln.  
*V*  
*p ppp mp*  
*sul tasto*

Vla.  
*V*  
*p ppp p*  
*sul tasto arco*  
*s.p. pp mp*

Vc.  
*V*  
*n p pp p ppp p*  
*sul tasto*

Electro  
*176*



185

Fl.

Cl.

Trb.

Voix

Vib.

P.

Gtr. E

Vln.

Vla.

Vc.

Electro

Personnage 1 - Digital

Il y a

51

3 gr. delay / delay / reverse  
fl. clar. / vln. vla. / guit. pno. perc.





193

Fl. *f* *ppp*

Cl. *ppp* *f* *ppp* *pp*

Trb. *n*

Voix *f* *ppp*

Vib. *p* *p* *cresc.*

P. *p* *cresc.* *p* *cresc.*

Gtr. E *f* *p*

Vln. (8) *ppp* *pppp* *ppp* *pp* *pp* *p*

Vla.

Vc.

193

Electro

subito  
♩=110

Fl. 196

Cl. 196

Trb. 196

Voix

Personnage 2 - Analogique

les corps as - - - so - ciés

Vib. 196

P. 196

Gtr. E 196

Vln. 196

Vla. 196

Vc. 196

Electro 196

3 gr. delay / delay / reverse  
fl. clar. / vln. vla. / guit. pno. perc.





rall. . . . . ♩=60 accel. . . . .

Fl. *mf* *f* *mp* *f* *mp* *mp* *f*

Cl. *mf* *f* *mp* *f* *mp* *mp* *f*

Trb. *mp* *f*

Voix

Vib. *mp*

P. *mp* *mp*

Gr. E *p* *p* *p* *p* *mp* *mp* *mp* *mp* *mp*

Vln. *f* *pp* *f* *pp* *f* *pp* *mp*

Vla. *>ppp* *f* *pp* *f* *pp* *mp*

Vc. *mp* *f*

206 Electro

55

3 gr. delay / delay / reverse delay  
fl. clar. vln. vla. vlc./ trb./ guit. pno. perc.

♩=80 **rall.**

Fl. 208

mp f mp ff mp ff f fff f fff f fff pp

Cl. 208

f mp f mp ff f fff f fff f fff pp

Trb. 208

mp mp fff

Voix 208

Vib. 208

p

P. 208

p 3 p 3

Gr. E. 208

mp mp p p p p p p p

Vln. 208

f mp f mp ff mp ff mp fff f fff f fff

Vla. 208

mp f mp f mp ff f fff f fff mp 6

Vc. 208

mp mp fff ppp

Electro 208

Fl.  $\text{♩} = 60$  **rall.** .....  $\text{♩} = 40$   $\text{♩} = 60$  **norm.**  
 Cl.  $\text{♩} = 60$  **rall.** .....  $\text{♩} = 40$   $\text{♩} = 60$  **norm.**  
 Trb. **sord cup**  
 Voix  
 Vib. **bowed**  
 P. 210 **mf**  
 Gtr. E **p**  
 Vln. **p** **sul pont**  
 Vla. **f** **mf** **p** **pp** **ppp**  
 Vc. **p** **ppp** **n** **ppp** **n**  
 Electro 210 **56**

3 gr. delay  
 fl. clar. / vln. vla. vlc./ guit. pno. perc.





215

Fl. *p* *pp* *pp* *f* *pp* *flatt.*

Cl. *p* *n* *pp* *f* *pp* *pp* *flatt.*

Trb. *pp* *p* *pp* *pp* *f* *pp* *senza sord.*

Voix *mf* *f* *f* *pp*  
 sont ni-ché nous som - mes ni - ché

Vib.

P. 215

Gtr. E (8)

Vln. *pizz.* *arco* *arco* *pizz.* *arco*

Vla. *pizz.* *arco* *arco* *arco*

Vc. *pizz.* *arco* *pizz.* *arco*

215

Electro

rall. . . . . ♩ = 60

Fl. *ord.*  
*f* *mf* *ff* *mp* *ff*  
*fff* *p* *f* *p* *mf*

Cl. *ord.*  
*f* *pp* *mf* *ff* *mp* *ff*  
*fff* *p* *ff* *f* *p* *f* *mf*

Trb.  
*pp* *f* *pp* *mf* *ff* *pp* *f* *pp*

Voix  
*fff* *f* *p* *f* *pp*  
 Han - té Han - tant

Vib.  
*p* *sempre*

P.  
*fff* *sempre*

Gtr. E  
*f* *p*

Vln. *sul pont.* *arco*  
*p < f* *p* *f* *mf < ff* *f < fff*  
*p* *f* *mf* *f*

Vla.  
*p* *f* *p* *f* *mf* *ff* *f < fff*  
*p* *f* *mf* *f*

Vc.  
*p < f* *mf* *ff* *f < fff* *p*

217 [57]

Electro

2 gr. delay  
 fl. clar. trb. / vln. vla. vlc.  
 sample syllabique "té/tant"



accel.

♩=70

Fl. *mp* *mf* *ff*

Cl. *mp* *mf* *ff*

Trb. *ff*

Voix *f* *p* *ff*  
Han - - - - - té

Vib. *fff* *mp*

P. *mp* *fff*

Gtr. E *fff*

Vln. *ff* *fff* *ffff*

Vla. *ff* *fff* *ffff*

Vc. *f* *fff*

Electro *221* **58**

3 gr. delay  
fl. clar. trb. / vln. vla. vic. / guit. pno. perc.



♩=60 **intermède électronique**

♩=65

**4**  
**4**

Fl. 225 15

pp 5 mp 3

Cl. 15

pp 6 mp 3

Trb. 15

Voix 15

pp f ppp

Le soin est de res - ter clos

Vib. 15

vibraphone

ppp mp 3 3

P. 225 15

ppp mp 3 5

Gtr. E 15

ppp 8va 5 6 mp

Vln. 15

ppp f 3 3 sul pont. ppp

Vla. 15

ppp f sul pont. ppp

Vc. 15

ppp f sul pont. ppp

séquence électronique  
225 1 minute

59

Electro

2 gr. delay  
trb./vlc.



poco rall. . . . . ♩=60

Fl. *pp* *mp* **5** **4**

Cl. *pp* *mp* **5** **6** **3**

Trb.

Voix **Personnage 1 & 2** à la limite du chuchotement *p* *n* *p* *pp* *mp* *p* *ppp* **narrateur** *mp* *p* *f*

Pour ne dé - si - rer que son front a - vec son front

Vib. *f* *p* *pp* *f*

P. **244** *ppp* *f* *p* *f* *pp* *mp*

Gtr. E *ppp* *ppp* *f* *p* *f* *p*

Vln. *ppp* *pp* *f* *pp* *pp* *p* *mp*

Vla. *ppp* *pp* *f* *pp* *pp* *p* *mp*

Vc. *ppp* *pp* *f* *pp* *pp* *p* *mp*

Electro **244** **62** **63**

1 gr. delay  
perc. pno. guit.



Fl. 247 *pp* *f* *pp* *f* *p* *f* *p*

Cl. *pp* *f* *pp* *p < f* *p* *f* *p*

Trb. *p < mf* *n* *n*

Voix *mp* *f* *mp* *f* *ppp* *p* *f* *p* *f*

c'est pile ou c'est face Dé - ja il y a du choix il ya

Vib. *pp* *f* *pp* *f*

P. 247 *pp* *f* *pp* *f* *f* *p* *8vb*

Gtr. E *ppp* *f* *pp* *f*

Vln. *f* *p* *f* *p* *f*

Vla. *f* *p* *f* *p* *f*

Vc. *f* *p* *f* *ppp* *mf* *p* *f*

Electro 247 64



254

Fl. *pp* *mf* *pp* *mf*

Cl. *> pp* *mf* *pp* *mf*

Trb. *ppp* *ff* *pp*

Voix

Numérique *mp* *f*

Narateur quasi récitatif, avec le minimum d'inflexion *mp*

À côté On ne voit que ce qu'on regarde

Vib. *f* *p* *f* *p*

P. 254 *f* *p* *f*

Gtr. E

Vln. *mf* *pp* *p* *mf* *pp* *pp* *f* *p*

Vla. *mf* *pp* *mf* *pp* *mp* *p* *f*

Vc. *mf* *pp* *mf* *pp* *mp* *f* *p*

254 **65**

Electro







268

Fl. *ff* *mp* 6

Cl. *ff* *mp* 6 6 7

Trb.

Voix *mp* *f* *mp* *pp* Narrateur *mp* 3

il ya con - duc - tion. Il ya con-duc-tion en -

Vib. *mp* 3

P. 268 *mp* 3 6 6 3

Gtr. E *mf* *p* 3 6 3

Vln. *p* 3 8va 5

Vla. *p* 6 5 6

Vc.

Electro 268

270

Fl.

Cl.

Trb.

Voix

tre les mêmes la ré - a - li - té n'ad-vien-dra qu'a-vec le tri - an - gle

Vib.

P.

Gtr. E

Vln.

Vla.

Vc.

270

Electro

Detailed description of the musical score: The page contains 14 staves of music. The Flute (Fl.) part features complex rhythmic patterns with slurs and fingerings (7, 5, 3, 3, 7, 6). The Clarinet (Cl.) part has similar patterns with slurs and fingerings (5, 3, 3, 7, 3, 7). The Trumpet (Trb.) part is mostly silent. The Voice part has lyrics: 'tre les mêmes la ré - a - li - té n'ad-vien-dra qu'a-vec le tri - an - gle'. The Vibraphone (Vib.) part has a melodic line with slurs and fingerings (6, 3). The Piano (P.) part has a simple accompaniment with slurs and fingerings (3). The Electric Guitar (Gtr. E) part has a rhythmic accompaniment with slurs and fingerings (3). The Violin (Vln.) part has a melodic line with slurs and fingerings (3, 3, 3, 3) and dynamics 'p' and '8va'. The Viola (Vla.) part has a melodic line with slurs and fingerings (3, 3) and dynamics 'p' and '6'. The Violoncello (Vc.) part is mostly silent. The Electro part is mostly silent.



272

Fl. *p* *f* *p* *f*

Cl. *p* *f* *p* *f*

Trb. *ppp*

Voix *p* *f*  
 un je un tu et un con - tex - te

Vib. *p*

P. *p* *ff*

Gtr. E *p*

Vln. *f* *p* *f*

Vla. *p* *f*

Vc. *ppp* *ff*

272

Electro

Fl. *mf* *mf* *p* *f* *p*

Cl. *mf* *mf* *p* *f* *p*

Trb. *ff* *p*

Voix *p* *ff* *p*  
 Une in - - - flex - - - ion

Vib. *f*

P. *f* *p*

Gr. E *p* *f* *p* *ppp*

Vln. *pp* *f* *pp* *f* *ppp*

Vla. *pp* *f* *pp* *f* *ppp*

Vc. *ff* *p* *pp*

Electro *H* *70*

276  $\frac{3}{4}$   $\frac{4}{4}$   $\frac{3}{4}$

Fl. *ff* *ppp*

Cl. *ff* *ppp*

Trb. *pp* *f* *pp*

Voix *mp* *f* *p*  
 Narrateur  
 on ne voit que ce qu'on re - gar - de

Vib. *ppp*

P. *mp* *ppp* *p* *ppp*

Gtr. E *mp* *ppp* *p* *f* *pp*

Vln. *n* *f* *pp* *f* *pp* *mf* *p* *f*

Vla. *n* *f* *pp* *f* *pp* *mf* *p* *f*

Vc. *n* *f* *pp* *f* *pp* *mf* *f*

276 71

Electro

279

Fl.

Cl.

Trb.

Voix

Vib.

P.

Gtr. E

Vln.

Vla.

Vc.

Electro

Numérique

C'est ain-si que je me vois

III. I.

sul pont. arco

sul pont.

sul pont.

279 72 73 74 75



286 3/4

Fl. *p* *f* *p* *ff*

Cl. *p* *f* *p* *ff*

Trb. *pp* *f* *p* *pp*

Voix *p* *ff* *pp*  
 Narrateur  
 c'est ain-si que je vous vois me voi - re

Vib. *dim.* *ppp* *f*

P. *ff*

Gtr. E *f* *p*

Vln. *f* *pp* *p* *pp* *p*

Vla. *f* *pp* *p* *pp*

Vc. *f* *pp* *pp*

Electro 286 77 78

290 ♩=60

Fl.

Cl.

Trb.

Voix

Vib.

P.

Gtr. E

Vln.

Vla.

Vc.

Electro

79

Detailed description of the musical score for page 78, measures 290-300:

- Flute (Fl.):** Measures 290-300. Starts with a rest. Measure 291 has a triplet of eighth notes (mp), followed by a quintuplet of eighth notes (ff), and ends with a single eighth note (p). Measure 292 has a triplet of eighth notes (p), followed by a quintuplet of eighth notes (ff), and ends with a single eighth note (p). Measure 293 has a triplet of eighth notes (p), followed by a quintuplet of eighth notes (ff), and ends with a single eighth note (p).
- Clarinet (Cl.):** Measures 290-300. Measure 290 has a triplet of eighth notes (mf), followed by a quintuplet of eighth notes (ff), and ends with a single eighth note (mp). Measure 291 has a triplet of eighth notes (mf), followed by a quintuplet of eighth notes (ff), and ends with a single eighth note (p). Measure 292 has a triplet of eighth notes (p), followed by a quintuplet of eighth notes (ff), and ends with a single eighth note (p).
- Trombone (Trb.):** Measures 290-300. Measure 290 has a rest. Measure 291 has a rest. Measure 292 has a quintuplet of eighth notes (pp), followed by a triplet of eighth notes (f), and ends with a single eighth note (pp). Measure 293 has a triplet of eighth notes (pp), followed by a quintuplet of eighth notes (f), and ends with a single eighth note (f).
- Voix:** Measures 290-300. All measures contain rests.
- Vibraphone (Vib.):** Measures 290-300. Measure 290 has a triplet of eighth notes (mp), followed by a quintuplet of eighth notes (f), and ends with a single eighth note (pp). Measure 291 has a rest. Measure 292 has a rest. Measure 293 has a rest.
- Piano (P.):** Measures 290-300. Measure 290 has a triplet of eighth notes (mp), followed by a quintuplet of eighth notes (f), and ends with a single eighth note (pp). Measure 291 has a rest. Measure 292 has a rest. Measure 293 has a rest.
- Electric Guitar (Gtr. E):** Measures 290-300. Measure 290 has a triplet of eighth notes (mp), followed by a quintuplet of eighth notes (f), and ends with a single eighth note (pp). Measure 291 has a rest. Measure 292 has a rest. Measure 293 has a rest.
- Violin (Vln.):** Measures 290-300. Measure 290 has a triplet of eighth notes (pp), followed by a quintuplet of eighth notes (f), and ends with a single eighth note (pp). Measure 291 has a triplet of eighth notes (pp), followed by a quintuplet of eighth notes (f), and ends with a single eighth note (pp). Measure 292 has a triplet of eighth notes (pp), followed by a quintuplet of eighth notes (f), and ends with a single eighth note (pp). Measure 293 has a triplet of eighth notes (pp), followed by a quintuplet of eighth notes (f), and ends with a single eighth note (pp).
- Viola (Vla.):** Measures 290-300. Measure 290 has a rest. Measure 291 has a triplet of eighth notes (mp), followed by a quintuplet of eighth notes (f), and ends with a single eighth note (pp). Measure 292 has a triplet of eighth notes (pp), followed by a quintuplet of eighth notes (f), and ends with a single eighth note (pp). Measure 293 has a triplet of eighth notes (pp), followed by a quintuplet of eighth notes (f), and ends with a single eighth note (pp).
- Violoncello (Vc.):** Measures 290-300. Measure 290 has a rest. Measure 291 has a triplet of eighth notes (mp), followed by a quintuplet of eighth notes (f), and ends with a single eighth note (pp). Measure 292 has a triplet of eighth notes (pp), followed by a quintuplet of eighth notes (f), and ends with a single eighth note (pp). Measure 293 has a triplet of eighth notes (pp), followed by a quintuplet of eighth notes (f), and ends with a single eighth note (p).
- Electro:** Measures 290-300. Measure 290 has a rest. Measure 291 has a rest. Measure 292 has a rest. Measure 293 has a rest.

294  $\frac{4}{4}$

Fl.  $\frac{3}{4}$

Cl.

Trb. *p* *f* *fff* *mf* *ff* *pp*

Voix

Vib. *mp* *f*

P. *mp* *f* *mp* *f*

Gtr. E *mp* *pp* *mf* *f* *pp* *f*

Vln. *ff* *mf* *ff* *mf* *fff* *pp*

Vla. *ff* *mf* *ff* *mf* *fff* *pp*

Vc. *ff* *mf* *fff* *f* *mf* *fff* *pp*

294 **80**

Electro



296

Fl.

Cl.

Trb.

Voix

Vib.

P.

Gtr. E

Vln.

Vla.

Vc.

Electro

3/4

2/4

3/4

3/4

*mp*

*f*

*p*

*f*

*p*

*pp*

*p*

Narrateur

*pp*

*mp*

*ppp*

*p*

*f*

*p*

La ma - niè - - - re Le tis - su du mon - de

-> soufle

*pp*

*pp*

*pp*

*pp*

296

81

82

300

Fl.

Cl.

Trb.

Voix

Vib.

P.

Gtr. E

Vln.

Vla.

Vc.

Electro

300

Numerique

Analogique

A cô - té et au-tour et au-tour

*p* *mf* *f* *pp* *mp* *f* *ff* *mf* *mp* *f* *mp* *ff* *mp* *mp* *f* *mp* *f* *mp* *mp* *f* *mp*

305

Fl.

Cl.

Trb.

Voix

Vib.

P.

Gtr. E

Vln.

Vla.

Vc.

Electro

305

*f* *mp* *f* *mp* *f* *p* *f* *p* *f* *p*

*f* *mp* *f* *mp* *f* *p* *f* *p* *f* *p*

*mp* *f* *mp* *p* *mf* *p*

*mp* *mf* *p* *f* *p*

*mp* *f* *mp* *mp* *f* *mp* *f*

*mp* *f* *mp* *f*

*f* *p* *f* *p* *f*

*mf* *ff* *mf* *p* *f* *p*

*mf* *ff* *mf* *p* *f* *p*

*mf* *ff* *mf* *p* *f* *p*

305

Narrateur

Voy - ant vi - si - ble et mo - bi - le

310  $\frac{2}{4}$   $\frac{2}{4}$   $\frac{3}{4}$

Fl. *p* *f* *p* *f* *p* *f* *p* *mf* *p*

Cl. *p* *f* *p* *f* *p* *f* *p* *mf* *p*

Trb. *p* *f* *p* *pp* *ff*

Voix

Analogique

*p* *f* *p*

par - - - - - mi

Vib. *mp* *f* *mp* *ff* *mp*

P. *mp* *f* *mp* *ff* *mp*

Gtr. E *p* *ff* *p*

Vln. *p* *f* *p* *p* *f* *p*

Vla. *p* *f* *p* *p* *f* *p*

Vc. *p* *f* *p* *pp* *ff* *p* *f* *p*

310

Electro

313

Fl. *p* *f* *fff* *f* *fff* *mf* *p*

Cl. *p* *f* *fff* *f* *fff* *mf* *p*

Trb. *p* *fff* *f* *fff*

Voix *p* *f* *mp* *f* *p* *ppp*  
 On est au nom - bre des cho - - - - - ses

Vib. *p* *ff*

P.  
 313 *fff* *ff* *ff*

Gr. E *f* *pp* *fff* *pp* *fff* *mf* *fff*

Vln. *p* *f* *fff* *f* *fff* *mp*

Vla. *p* *f* *mf* *fff* *f* *fff* *mp*

Vc. *p* *ff* *fff* *fff* *f* *fff* *mf* *mp*

313

Electro



320 **83**

Fl. *p* *f* *p* *f* *p* *f*

Cl. *f* *p* *f* *p* *f* *p*

Trb.

Voix

Vib. *p*

P. *p*

Gtr. E *p*

Vln. *p*

Vla. *p*

Vc.

Electro

320 **83**

rall.

♩=70

322

Fl. *p* *f* *p* *f* *p* *mf* *p* *mf* *pp*

Cl. *f* *p* *f* *p* *f* *mf* *p* *mp* *pp*

Trb.

Voix

Vib. *ff*

P. *ff*

Gr. E *ff*

Vln. *f* *p*

Vla. *f* *p*

Vc.

322

Electro





rall. . . . . ♩=45 ♩=55

Fl. *ppp* *f* *mp*

Musical notation for Flute (Fl.) starting at measure 326. The first system features sixteenth-note patterns with fingerings 6, 7, and 6. The second system features a melodic line with slurs and fingerings 5, 6, 7, and 6. Dynamics range from *ppp* to *f* and *mp*.

Cl. *ppp* *f* *mp*

Musical notation for Clarinet (Cl.) starting at measure 326. The first system features sixteenth-note patterns with fingerings 7, 6, and 7. The second system features a melodic line with slurs and fingerings 6, 7, 6, and 7. Dynamics range from *ppp* to *f* and *mp*.

Trb.

Musical notation for Trumpet (Trb.) showing rests in both systems.

Voix *f* *p* *f*

Je tiens les cho - ses en cer - cle au tour de moi

Vocal line starting at measure 326. The first system is a rest. The second system features a melodic line with slurs and a triplet. Dynamics range from *f* to *p* and *f*. The lyrics are: "Je tiens les choses en cercle autour de moi".

Vib. *f* *p* *mp*

Musical notation for Vibraphone (Vib.) starting at measure 326. The first system features sixteenth-note patterns with dynamics *f* and *p*. The second system features sixteenth-note patterns with slurs and fingerings 7, 6, 7, and 5. Dynamics range from *f* to *p* and *mp*.

P. *f* *p* *mp* *8va*

Musical notation for Piano (P.) starting at measure 326. The first system features sixteenth-note patterns with dynamics *f* and *p*. The second system features sixteenth-note patterns with slurs and fingerings 6, 7, 5, and 6. Dynamics range from *f* to *p* and *mp*. *8va* markings are present above the second system.

Gtr. E *p* *f*

Musical notation for Electric Guitar (Gtr. E) starting at measure 326. The first system features sixteenth-note patterns. The second system features a melodic line with slurs and dynamics *p* and *f*.

Vln. *ppp* *pp* *f* *8va*

Musical notation for Violin (Vln.) starting at measure 326. The first system features sixteenth-note patterns with dynamics *ppp* and *pp*. The second system features a melodic line with slurs and fingerings 3 and 3. Dynamics range from *ppp* to *pp* and *f*. *8va* marking is present above the first system.

Vla. *ppp* *pp* *f*

Musical notation for Viola (Vla.) starting at measure 326. The first system features sixteenth-note patterns with dynamics *ppp* and *pp*. The second system features a melodic line with slurs and fingerings 3 and 3. Dynamics range from *ppp* to *pp* and *f*.

Vc. *pp* *f*

Musical notation for Violoncello (Vc.) starting at measure 326. The first system is a rest. The second system features a melodic line with slurs and fingerings 6 and 3. Dynamics range from *pp* to *f*.

Electro 326 84

Musical notation for Electro starting at measure 326. The first system is a rest. The second system is a rest. A page number "84" is enclosed in a box.

Fl. 328 *p*

Cl. *p*

Trb.

Voix *pp* *p* *f* *p*

On tient les choses en cer - cle au tour de

Vib. *p*

P. 328 *p* *sva*

Gtr. E

Vln. *v*

Vla. *v*

Vc. *v*

Electro 328



331

Fl.

Cl.

Trb.

Voix

Vib.

P.

Gtr. E

Vln.

Vla.

Vc.

331

Electro

4/4

mf

pp

f

p

On se tient

ff

ff

disto metal

sul pont

arco

mp

f

pp

f

mp

f

pp

f

fff

mp

f

pp

f

fff

331

333  $\text{♩} = 70$

Fl. *fff* *p* *fff* *p* *fff*

Cl. *fff* *p* *fff* *p*

Trb. *f* *p* *fff* *p* *p*

Voix

Vib. *p* *fff* *p* *fff* *p*

P.

Gtr. E *f* *ppp* *f* *f*

Vln. *fff* *p* *fff* *f* *f* *f* *fff* *mp*

Vla. *fff* *p* *fff* *f* *f* *f* *mf* *mp*

Vc. *p* *fff* *f* *f* *f* *mf*

333

Electro

335

Fl. *p* *fff* *p* *fff* *p* *fff* *p*

Cl. *fff* *p* *fff* *p* *fff* *p*

Trb. *fff* *p* *p* *f*

Voix  
*mf* *f* *p* *quasi récitatif* *p* *pp*  
 Tout est par - mis Et le tis-su du mon-de se con-tracte

Vib. *fff* *p* *fff* *f*  
 vibraphone bowed L.V.

P.  
 335

Gtr. E *f* *ff* *f* *ff* *PPP* *f* *p* *f* *p*

Vln. *f* *p* *ff* *p* *ff*

Vla. *f* *p* *fff*

Vc. *mp* *f* *p*

Electro  
 335







347  $\text{♩} = 50$   $\text{♩} = 100$

Fl. *p* *ff* *pp* *f* *pp* *f* *pp* *f* *pp*

Cl. *p* *ff* *p* *f* *pp* *f* *pp*

Trb. *p* *ff*

Voix  
Sans source ponc - tuelle *p* *f* *pp*

Vib. *fff* *pp* *fff* *pp*

P. 347

Gtr. E *pp* *fff* *pp*

Vln. *arco* *p* *ff* *pp* *f* *pp* *f*

Vla. *arco* *p* *ff* *pp* *f* *pp*

Vc. *arco* *p* *ff* *pp* *f* *pp*

Electro 347

Fl. *349*  
*f* *pp* *f* *pp* *f* *pp* *f* *mp* *f* *mp*

Cl. *f* *pp* *f* *pp* *f* *pp* *f* *mp* *f* *mp* *f*

Trb. *pp* *ff* *pp*

Voix

Vib. *vibraphone*  
*norm.*  
*mf* *p* *f* *p*

P. *349*  
*mf* *p* *f* *p*

Gtr. E *mf* *pppp*

Vln. *pp* *f* *pp* *f* *pp* *ff* *p* *ff* *f* *p* *f*

Vla. *f* *pp* *f* *pp* *f* *pp* *ff* *p* *ff* *p* *f* *p* *f*

Vc. *f* *pp* *f* *pp* *ff* *p* *ff* *p* *f* *p*

Electro *349*

351

Fl. *f mp f mp f p f p f p*

Cl. *mp f mp f mp f p f p f p*

Trb. *p f p*

Voix

Vib. *p fff mf cresc.*  
drum  
vibraphone

P. *f fff mf cresc.*

Gtr. E *f fff*

Vln. *p f p f p*

Vla. *p f p f p*

Vc. *f p f p f*

351

Electro

This page of a musical score contains measures 353 through 356. The instruments and their parts are as follows:

- Fl. (Flute):** Measures 353-356. Starts with a sixteenth-note triplet (6) *f*, followed by a sixteenth-note triplet (*p*) and a sixteenth-note triplet (*f*). Measure 354 has a sixteenth-note triplet (*p*) and a sixteenth-note triplet (*ff*). Measure 355 has a sixteenth-note triplet (*p*) and a sixteenth-note triplet (*f*). Measure 356 has a sixteenth-note triplet (*p*) and a sixteenth-note triplet (*f*).
- Cl. (Clarinet):** Measures 353-356. Starts with a sixteenth-note triplet (*f*), followed by a sixteenth-note triplet (*p*) and a sixteenth-note triplet (*f*). Measure 354 has a sixteenth-note triplet (*p*) and a sixteenth-note triplet (*ff*). Measure 355 has a sixteenth-note triplet (*p*) and a sixteenth-note triplet (*f*). Measure 356 has a sixteenth-note triplet (*p*) and a sixteenth-note triplet (*f*).
- Trb. (Trumpet):** Measures 353-356. Rests.
- Voix (Voice):** Measures 353-356. Rests.
- Vib. (Vibraphone):** Measures 353-356. Starts with a sixteenth-note triplet (*ff*), followed by a sixteenth-note triplet (*fff*). Measure 354 has a sixteenth-note triplet (*fff*). Measure 355 has a sixteenth-note triplet (*p*) and a sixteenth-note triplet (*p*). Measure 356 has a sixteenth-note triplet (*p*) and a sixteenth-note triplet (*p*).
- P. (Piano):** Measures 353-356. Starts with a sixteenth-note triplet (*ff*), followed by a sixteenth-note triplet (*fff*). Measure 354 has a sixteenth-note triplet (*fff*). Measure 355 has a sixteenth-note triplet (*p*) and a sixteenth-note triplet (*p*). Measure 356 has a sixteenth-note triplet (*p*) and a sixteenth-note triplet (*p*).
- Gr. E (Electric Guitar):** Measures 353-356. Starts with a sixteenth-note triplet (*ff*), followed by a sixteenth-note triplet (*pp*).
- Vln. (Violin):** Measures 353-356. Starts with a sixteenth-note triplet (*p*), followed by a sixteenth-note triplet (*ff*) and a sixteenth-note triplet (*p*). Measure 354 has a sixteenth-note triplet (*f*). Measure 355 has a sixteenth-note triplet (*f*). Measure 356 has a sixteenth-note triplet (*f*).
- Vla. (Viola):** Measures 353-356. Starts with a sixteenth-note triplet (*f*), followed by a sixteenth-note triplet (*p*). Measure 354 has a sixteenth-note triplet (*p*) and a sixteenth-note triplet (*ff*). Measure 355 has a sixteenth-note triplet (*p*) and a sixteenth-note triplet (*f*). Measure 356 has a sixteenth-note triplet (*p*) and a sixteenth-note triplet (*f*).
- Vc. (Violoncello):** Measures 353-356. Starts with a sixteenth-note triplet (*p*), followed by a sixteenth-note triplet (*ff*).
- Electro (Electronica):** Measures 353-356. Rests.

This page of a musical score, numbered 101, covers measures 355 through 360. The score is arranged for a large ensemble, including woodwinds, brass, strings, and percussion. The key signature is one flat (B-flat major or D minor), and the time signature is 4/4. The score is divided into two systems by a vertical bar line between measures 355 and 356.

**Flute (Fl.):** Measures 355-360 feature a melodic line with frequent triplets. Dynamics range from *f* to *p*.  
**Clarinet (Cl.):** Mirrors the flute's melodic line with triplets and slurs. Dynamics range from *p* to *f*.  
**Trumpet (Trb.):** Remains silent in measure 355. In measure 356, it plays a sustained note with a dynamic range from *mf* to *ff*, ending in measure 360 with a *p* dynamic.  
**Vibraphone (Vib.):** Features a rhythmic pattern of eighth notes in measure 355 (*f*), a drum solo in measure 356 (*p* to *fff*), and a vibraphone solo in measure 360 (*p* to *f*).  
**Piano (P.):** The right hand plays a complex melodic line with triplets and sextuplets, dynamics from *f* to *fff*. The left hand provides harmonic support with chords and triplets, dynamics from *f* to *fff*.  
**Electric Guitar (Gtr. E):** Plays a melodic line in measure 355 (*f*), a chordal texture in measure 356 (*fff* to *p*), and a final chord in measure 360 (*fff*).  
**Violin (Vln.) and Viola (Vla.):** Both instruments play a melodic line in measure 355 (*pp* to *fff* to *p*) and are silent in the subsequent measures.  
**Violoncello (Vc.):** Plays a melodic line in measure 355 (*pp* to *fff* to *p*) and is silent in the subsequent measures.  
**Electro:** Remains silent throughout the page.

357

Fl.

Cl.

Trb.

Voix

Vib.

P.

Gtr. E

Vln.

Vla.

Vc.

357

Electro

Detailed description of the musical score: This page contains measures 357 through 366. The Flute (Fl.) part features a melodic line with sextuplets and triplets, alternating between fortissimo (f) and piano (p) dynamics. The Clarinet (Cl.) part mirrors the flute's melodic structure with similar rhythmic patterns. The Trumpet (Trb.) part has a few notes in the first measure, then rests. The Voice (Voix) part is silent. The Vibraphone (Vib.) part plays a complex rhythmic accompaniment with a 12-measure sextuplet in the first measure, followed by triplets and sextuplets. The Piano (P.) part has a similar 12-measure sextuplet in the first measure, with triplets and sextuplets throughout. The Electric Guitar (Gtr. E) part has a single note in the first measure, then rests. The Violin (Vln.), Viola (Vla.), and Violoncello (Vc.) parts play a rhythmic accompaniment of triplets, with dynamic markings ranging from pianissimo (pp) to fortissimo (ff). The Electro part is silent.

This page of a musical score, numbered 103, covers measures 359 to 368. The score is arranged for a large ensemble, including woodwinds, brass, strings, and keyboard instruments. The key signature is one flat (B-flat major or D minor), and the time signature is 4/4. The music is characterized by complex rhythmic patterns, including sixteenth-note runs, triplets, and sextuplets, often spanning across bar lines. Dynamics range from piano (*p*) to fortissimo (*f*), with frequent crescendos and decrescendos. The Flute (Fl.) and Clarinet (Cl.) parts feature intricate melodic lines with many slurs and ties. The Piano (P.) part has a more rhythmic, accompanimental role with some melodic fragments. The Violin (Vln.), Viola (Vla.), and Violoncello (Vc.) parts play similar rhythmic patterns, often with accents. The Vibraphone (Vib.) part has a melodic line with triplets. The Trumpet (Trb.), Voice, and Electric Guitar (Gtr. E) parts are mostly silent in this section. The Electro part is also silent. The page number 359 is printed at the beginning of the first staff and at the bottom left.



Fl. *361*  
*p* *ff* *p* *ff* *p* *ff* *p* *ff* *ff* *mf* *fff* *f*

Cl. *p* *ff* *p* *ff* *ff* *fff* *mf*

Trb. *p* *fff* *p*

Voix

Vib. *p* *fff* *mf*

drum

vibraphone

P. *361* *mf* *fff* *8<sup>th</sup>*

Gr. E *fff*

Vln. *pp* *ff* *pp* *ff* *pp* *ff* *ff* *p* *ff* *p*

Vla. *pp* *ff* *pp* *ff* *ff* *p* *ff* *p* *ff* *p*

Vc. *pp* *ff* *p* *ff* *p* *ff* *p* *ff* *p*

Electro *361*

Fl. *363* *fff* *f* *fff* *f* *mf* *ff* *mf* *ff*

Cl. *fff* *f* *fff* *f* *mf* *ff* *mf* *ff*

Trb. *p* *f* *p* *f* *p* *f* *f* *fff* *p* *fff*

Voix

Vib. *f* *fff* *f*

P. *363* *f* *f* *fff* *f*

Gr. E *f*

Vln. *p* *ff* *p* *ff* *p* *ff* *mf* *f* *fff*

Vla. *p* *ff* *p* *ff* *p* *ff* *mf* *f* *ff*

Vc. *p* *ff* *p* *ff* *p* *ff* *mf* *ff*

Electro *363*

365

Fl. *ff* *p* *mf* *mp* *f*

Cl. *ff* *p* *mf* *mp* *f*

Trb. *mp* *fff* *p*

Voix

Vib. *fff* *pp* *fff* *p* *f* *p*

P. *fff* *p* *f* *p*

Gtr. E

Vln. *ff* *p* *p* *f* *mf*

Vla. *p* *p* *mf* *ff*

Vc. *p*

Electro

365

mélange visqueux

♩=75 rall.

3/4

Fl. *f* *mf* *fff* *p* *f*

Cl. *mf* *fff* *p* *f*

Trb. *ff* *p* *ff* *p* *f* *p*

Voix

Vib. *f* *mf* *fff* *f* *p*

*subito*

P. *f* *p* *ff* *fff* *mf* *fff*

Gtr. E

Vln. *ff* *p* *ff* *ppp*

Vla. *p* *ff* *ppp*

Vc. *f* *p* *ppp*

Electro

♩=50

369

3/4

4/4

Fl. *f* *pp*

Cl. *f* *pp*

Trb. *pp*

Voix

Vib. drum *pp* *f* *ppp*

369

P. *ppp*

Gtr. E *ppp* *p*

Vln. *ff* *p*

Vla. *ff* *p*

Vc. *ff* *p*

369

Electro



# Furieusement

372

4/4

Fl. *ff* *fff*

Cl. *ff* *fff*

Trb.

Voix *fff* *pp*

Vib. *ffff* *ff* drum *p* *ff*

P. *ffff* 12 12

Gtr. E *ffff* *p* *ff*

Vln. *fff*

Vla. *fff*

Vc. *fff*

372

Electro

Fl. *fff* *mp* *fff*

Musical notation for Flute (Fl.) in treble clef. It features a melodic line with dynamic markings *fff*, *mp*, and *fff*. The piece includes triplet markings (3) and 12-measure rests.

Cl. *fff* *mp* *fff*

Musical notation for Clarinet (Cl.) in treble clef. It features a melodic line with dynamic markings *fff*, *mp*, and *fff*. The piece includes 12-measure rests.

Trb.

Musical notation for Trumpet (Trb.) in bass clef, showing a whole rest.

Voix

Musical notation for Voice (Voix) in treble clef, showing a whole rest.

Vib. *vibraphone*

Musical notation for Vibraphone (Vib.) in alto clef. It features a melodic line with dynamic markings *fff*, *mp*, and *fff*. The piece includes 6-measure and 12-measure rests.

P. *ff* *ff*

Musical notation for Piano (P.) in grand staff (treble and bass clefs). It features a melodic line with dynamic markings *ff* and *ff*. The piece includes 12-measure rests.

Gtr. E *ff*

Musical notation for Electric Guitar (Gtr. E) in treble clef. It features a sustained chord with dynamic marking *ff*.

alterner les mouvements d'archet dès que nécessaire

Vln. *fff* *mp* *ff*

Musical notation for Violin (Vln.) in treble clef. It features a melodic line with dynamic markings *fff*, *mp*, and *ff*. The piece includes 12-measure rests.

Vla. *fff* *mp* *ff*

Musical notation for Viola (Vla.) in alto clef. It features a melodic line with dynamic markings *fff*, *mp*, and *ff*. The piece includes 6-measure and 12-measure rests.

Vc. *fff* *mp* *ff*

Musical notation for Violoncello (Vc.) in bass clef. It features a melodic line with dynamic markings *fff*, *mp*, and *ff*. The piece includes 12-measure and 6-measure rests.

Electro *373*

Musical notation for Electro in bass clef, showing a whole rest.



accel.

♩=60

Fl. *374* *6* *3* *12* *12* *fff*

Cl. *12* *12* *12* *fff*

Trb. *p* *fff*

Voix

Vib. *12* *12* *12* *fff*

P. *374* *12* *12* *8va* *12* *12* *fff*

Gtr. E *6* *6* *6* *6*

Vln. *12* *12* *12* *fff*

Vla. *12* *12* *12* *fff*

Vc. *12* *12* *12* *fff*

Electro *374*